

# QUARTERLY NEWSLETTER



**Fall 2025**

## A Message from our Executive Director

Dear Families,

As the crisp air of fall begins to settle in and the season of change surrounds us, we at WarmLine Family Resource Center want to remind you that you are not alone on your journey.

Raising a child with special needs is a path filled with unique joys and challenges, and we understand that it can sometimes feel overwhelming. Whether you're navigating a new diagnosis, seeking resources, or simply looking for someone who understands, WarmLine is here to support you—every step of the way.

This fall, we invite you to connect with us. Our team—made up of parents who have walked similar paths—offers free, confidential support, guidance, and information to families like yours. From early intervention and special education help to workshops, events, and emotional support, we're here to listen, empower, and stand beside you.

Why reach out to WarmLine this season?

- Personalized support from people who understand
- Help navigating school and community services
- Opportunities to connect with other families
- Tools to advocate for your child with confidence
- A safe space to ask questions, share your story, or just be heard

No matter where you are in your journey, we're here for you. Let's walk through this season—together.

You can reach us by phone, email, or visit our website to learn more about our programs and upcoming events.



## Read on for...

Caregiver Connection  
Events.....2

Special Education  
Workshops.....3

Local Community  
Advisory Committee....4

Fall Calendar.....5

Linda Hernandez  
Executive Director  
WarmLine Family Resource Center



# Caregiver Connections

WarmLine has heard the call for more parent-to-parent connection, and we're excited to offer new opportunities this Fall!



## In-Person Caregiver Connection

Come by the WarmLine office on 9/20, 10/18, and/or 11/15 to chat, learn, and connect with caregivers on a similar journey.

Register **HERE** or at [warmlinefrc.org](http://warmlinefrc.org)

**WarmLine**  
FAMILY RESOURCE CENTER

## Caregiver Connection

WarmLine FRC is welcoming families raising a child with a disability to connect, learn and empower each other.



Refreshments will be provided.

Limited childcare is available—please arrange other care if you can. If you need our childcare, indicate the number of children you'll bring on the form. If you end up not attending, please let us know so we can offer your spot to another family.

08/16/2025

09/20/2025

10/18/2025

11/15/2025

**10 a.m. - 12 p.m.**

3336 Bradshaw Rd. #255  
Sacramento, CA 95827

**Register Here**

or at [warmlinefrc.org](http://warmlinefrc.org)



[warmline@warmlinefrc.org](mailto:warmline@warmlinefrc.org) - (916) 455-9500

# Support Groups

WarmLine's Family Support Group continues to meet online on the first Thursday of the month from 4-5:30pm.

Register **HERE** or at [warmlinefrc.org](http://warmlinefrc.org)



**PARENT CAFE**  
MAKING CONNECTIONS • GOOD CONVERSATIONS •  
STRENGTHENING FAMILIES FROM THE INSIDE OUT

**OCTOBER 22, 2025**  
10:00 AM - 12:00 PM  
WARMLINE FAMILY RESOURCE CENTER  
3336 BRADSHAW RD #255, SACRAMENTO 95827

**About Parent Cafes**  
A Parent Café is a structured and supportive gathering to engage in meaningful conversations on topics related to parenting, family well-being, and community connections. In Cafés every voice is valued, and everyone has the opportunity to both learn and lead. The Parent Café process is a way to build the Strengthening Families™ Protective Factors.

**Event Highlights**  
For Sac County families with children 0-5 years old  
Connect with families who also have young children  
Limited childcare available  
Warmline will have child care available for up to 10 children  
Complimentary snacks  
Enjoy good conversation and snacks  
Register to reserve your spot  
<https://forms.gle/z2n21v76UWEY1YH6>  
For more information contact: 916-455-9500

Scan QR code to register

**WarmLine**  
FAMILY RESOURCE CENTER

SPCC Early Learning





## Special Education Workshops

COMING TO A LIBRARY NEAR YOU!



### Get Organized!

These special education workshops are for everyone who has a child in special education or who is curious about initiating the special education process.

You'll get organizing materials, information about how to navigate special education, and ways to make sure your child is receiving the education they deserve.

### 4 Options this Fall:

#### Dates

Sat, Sep 6 at South Natomas Library

Sat, Sep 27 at Elk Grove Library

Wed, Oct 15 at the MIND (En Español)

Sat, Nov 1 at El Dorado Hills Library

### Special Education IEP Workshops

Let's Get Organized!

Please join us for one of our IEP Special Education Workshops.

- Each workshop includes an overview of the special education with a deep dive into the parts of the IEP document and process.
- You'll receive a free binder and other supplies to organize your IEP documents with us, so make sure you bring anything that needs sorting.

All workshops will take place in person from  
**10:30 am - 12:30 pm**

**DATES & LOCATIONS**

|  |   |
|--|---|
| <b>Sat, September 6</b><br><b>South Natomas Library</b><br>2901 Third St.            | Note: Childcare is not provided for these workshops. Online workshop dates will be announced later this year.<br><br>(916) 455-9500<br><a href="mailto:warmline@warmlinefc.org">warmline@warmlinefc.org</a> |
| <b>Sat, September 27</b><br><b>Elk Grove Library</b><br>8900 Elk Grove Blvd.         |   |
| <b>Sat, November 1</b><br><b>El Dorado Hills Library</b><br>7455 Silver Valley Pkwy. |   |

Click [here](#) to register.

Register



Registrarse



### Taller sobre Educación Especial y el IEP - en español!

Vamos a organizarnos!

Acompáñenos a nuestro Taller de Educación Especial y el IEP.

- Cada taller incluye una descripción general de la educación especial, con un análisis detallado de las partes del documento y del proceso del IEP.
- Recibirá una carpeta gratuita y otros materiales para organizar sus documentos del IEP, así que asegúrese de traer todo lo que necesite organizar.

**Miércoles 15 de octubre**  
**6:00pm-8:00pm**

**MIND Institute**  
2825 50th St, Sacramento, CA 95817

Nota: El cuidado de niños no está disponible para este taller.

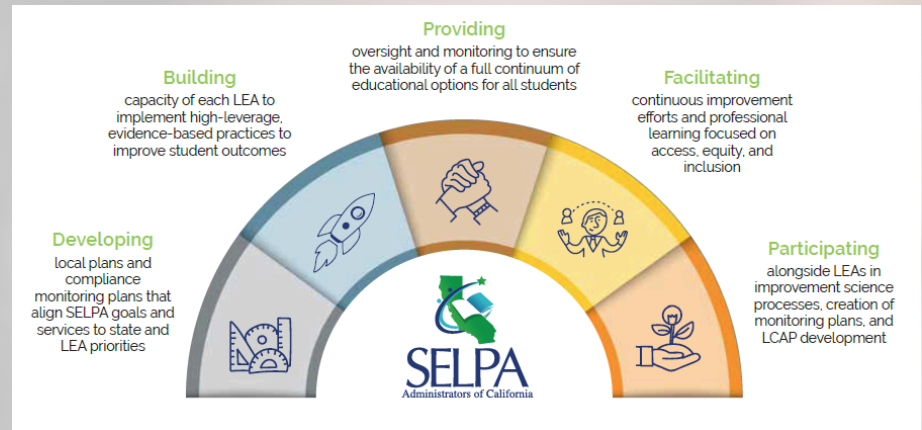
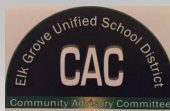
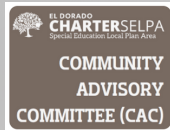
Pulse aquí para registrarse

Contáctenos!  
(916) 922-1490  
[warmline@warmlinefc.org](mailto:warmline@warmlinefc.org)



# Community Advisory Committees

Join your Community Advisory Committee to learn about how your child's special education program works and to influence decision making.



## What is a CAC?

A Community Advisory Committee (or CAC) is made up of families, professionals, and community members who give input on the "Local Plan" for special education in your SELPA.

from the SELPA Administrators of California at [selpa.info/](http://selpa.info/)

## What is a SELPA?

A Special Education Local Plan Area (or SELPA) is a geographic area that organizes that region's school districts, Counties of Education, and charter schools into a group that oversees the area's special education programs.

*Find YOUR C.A.C.*

Find your own CAC through your SELPA:

- 1) You can find your SELPA's information by clicking [here](#) or by going to [cde.ca.gov](http://cde.ca.gov) and searching "Special Education Local Plan Area."
- 2) Scroll down to see a list sorted by county.
- 3) Once on your SELPA's website, you can get info for the CAC meeting times by searching or contacting the SELPA.

**WarmLine Family Resource Center will be attending the Yolo County SELPA CAC meeting on September 8 at 7pm to present about our organization. Please join us in person at the conference center at YCOE or virtually by clicking [here](#) at 7pm.**





# EVENTS CALENDAR



## September 2025

Check out these & more at [warmlinefrc.org/news-events](https://warmlinefrc.org/news-events)

| Event Date   | Event Time  | Event Name                             | County                     | Registration Link   | Flyer   | Notes   |
|--------------|-------------|--|----------------------------|---|---|---|
| Sep 4, 20... | 4:00:00 PM  | WarmLine Family Support Group          | Alpine, El Dorado, Nevada, | <a href="https://us02w eb.zoom.us/j/81234567890">https://us02w eb.zoom.us/j/81234567890</a>                               | <a href="https://drive.google.com/file/d/1A2B3C4D5E6F7G8H9I0J/view">https://drive.google.com/file/d/1A2B3C4D5E6F7G8H9I0J/view</a> |   |
| Sep 6, 20... | 10:00:00 AM | WarmLine IEP Special Education         | Alpine, El Dorado, Nevada, | <a href="https://forms.gle/rGCmd16">https://forms.gle/rGCmd16</a>   | <a href="https://drive.google.com/file/d/1A2B3C4D5E6F7G8H9I0J/view">https://drive.google.com/file/d/1A2B3C4D5E6F7G8H9I0J/view</a> |   |
| Sep 6, 20... | 9:00:00 AM  | 916 Day - Family volunteer             | Sacramento                 | <a href="https://tinyurl.com/916DAY20">TINYURL.CO M/916DAY20</a>  | <a href="https://drive.google.com/file/d/1A2B3C4D5E6F7G8H9I0J/view">https://drive.google.com/file/d/1A2B3C4D5E6F7G8H9I0J/view</a> |   |
| Sep 8, 20... | 7:00:00 PM  | Yolo County SELPA Community            | Yolo                       | Click when ready:   |   |   |
| Sep 13, 2... | 8:00:00 AM  | 916 Day - Family volunteer             | Sacramento                 | <a href="https://tinyurl.com/916DAY20">TINYURL.CO M/916DAY20</a>  | <a href="https://drive.google.com/file/d/1A2B3C4D5E6F7G8H9I0J/view">https://drive.google.com/file/d/1A2B3C4D5E6F7G8H9I0J/view</a> |   |
| Sep 17, 2... | 7:00:00 PM  | How to Apply for SSI (Parents Helping) | All California             | <a href="https://www.tfaforms.com/">https://www.tfaforms.com/</a>   |   |   |
| Sep 20, 2... | 8:00:00 AM  | Aprendiendo Juntos MIND Institute      | Northern California        | <a href="https://ucdavis.co1.qualtrics.com/jiv/form/SV916DAY20">https://ucdavis.co1.qualtrics.com/jiv/form/SV916DAY20</a> |   | en Español  |
| Sep 20, 2... | 8:00:00 AM  | 916 Day - Family volunteering          | Sacramento                 | <a href="https://tinyurl.com/916DAY20">TINYURL.CO M/916DAY20</a>  | <a href="https://drive.google.com/file/d/1A2B3C4D5E6F7G8H9I0J/view">https://drive.google.com/file/d/1A2B3C4D5E6F7G8H9I0J/view</a> |   |
| Sep 20, 2... | 10:00:00 AM | WarmLine Family Connection             | Alpine, El Dorado, Nevada, | <a href="https://www.eventbrite.com/e/warmline-family-connection-tickets-71234567890">https://www.e ventbrite.co</a>      | <a href="https://drive.google.com/file/d/1A2B3C4D5E6F7G8H9I0J/view">https://drive.google.com/file/d/1A2B3C4D5E6F7G8H9I0J/view</a> |   |
| Sep 22, 2... | 6:00:00 PM  | Fundamentos de Defensa en la           | All California             | <a href="https://dredf.org/event/fundamentos-de-defensa-en-la">https://dredf.org/event/fun</a>                            |   |   |
| Sep 24, 2... | 6:00:00 PM  | Sankofa - Meeting for families &       | Northern California        | <a href="https://health.ucdavis.edu/health-events/sankofa">https://health .ucdavis.edu/</a>                               | <a href="https://health.ucdavis.edu/health-events/sankofa">https://healt h.ucdavis.ed</a>   | <a href="https://ucdavishealth.org">https://ucda vishealth.zo</a> |
| Sep 27, 2... | 10:00:00 AM | WarmLine IEP Special Education         | Alpine, El Dorado, Nevada, | <a href="https://docs.google.com/forms/d/1A2B3C4D5E6F7G8H9I0J/view">https://docs.g oogle.com/for</a>                      | <a href="https://drive.google.com/file/d/1A2B3C4D5E6F7G8H9I0J/view">https://drive.google.com/file/d/1A2B3C4D5E6F7G8H9I0J/view</a> |   |

